

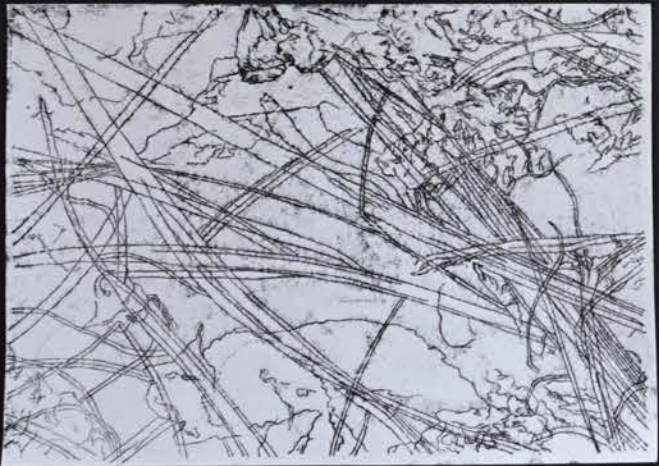
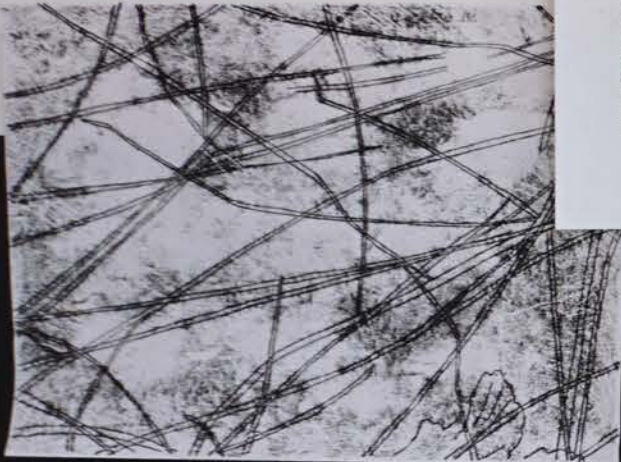
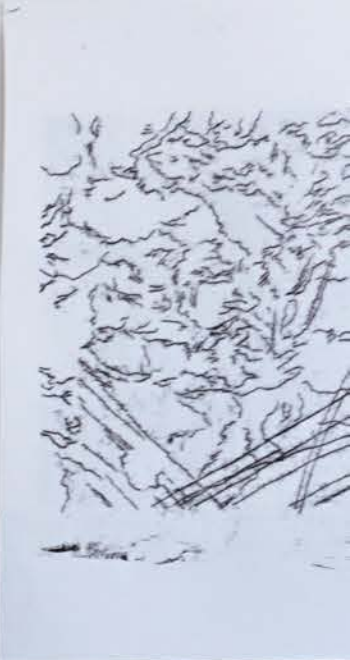
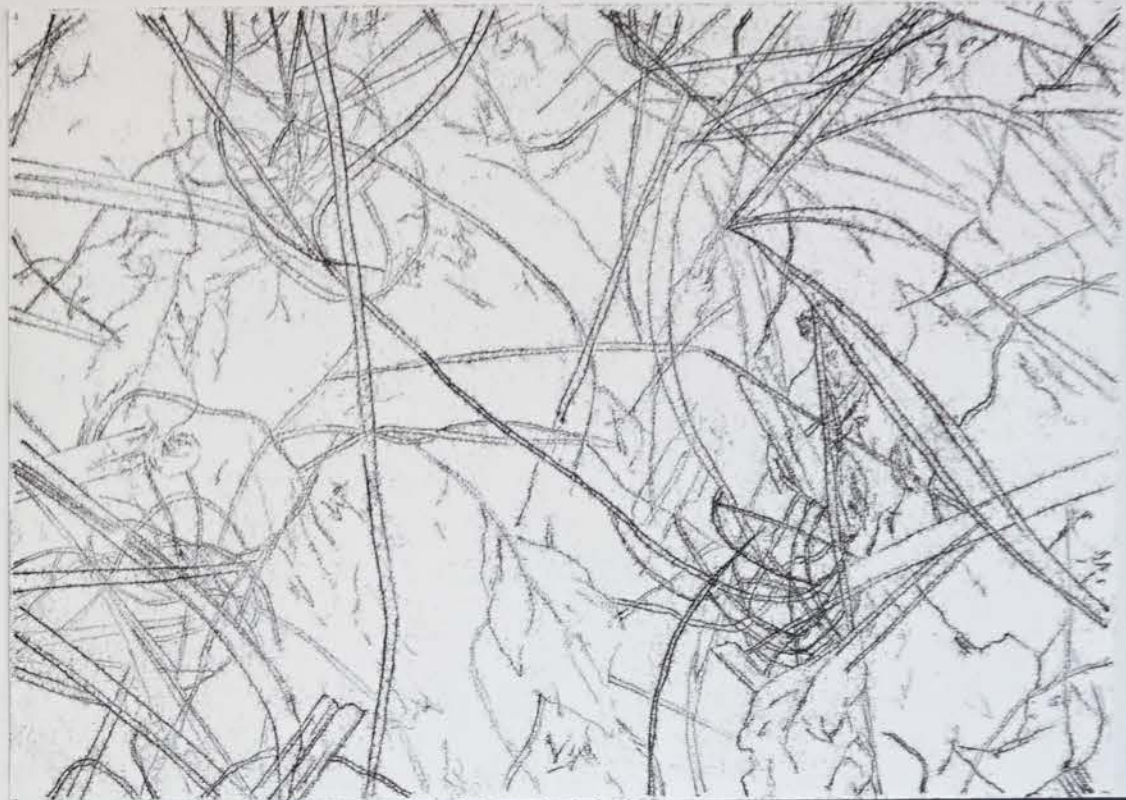




And when I look back
at the way I have
been thinking about
the world, I realize
that I have been
thinking about it
in a way that is
not very different
from the way that
I have been thinking
about it for a long
time.



The world is a
very strange
place.



The world is a
very strange
place.



Roots tangle in soil in the
soil excrement in the soil
leaves in the soil wings
legs eyes where cells meet
cells mycelia links roots
in soil roots join rhizomes
join stems join leaves join
flowers petals twist and
share



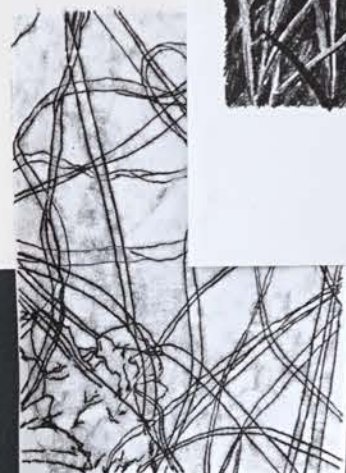


HOTEL

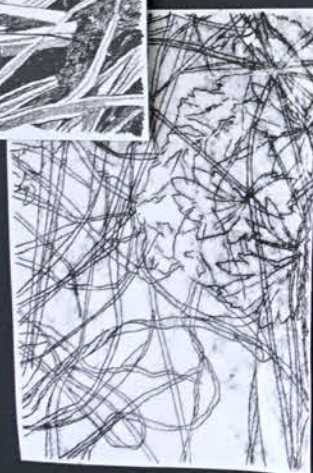


When the autumn's dun
comes singing crisp chorus
under foot and paw and
tarsus.





When a man looks to the
sea, he sees the sea and the
sky. The girl, the woman,
the companion, the companion,
and it's a long way.



Yorkshire Artspace
Exchange Place Studios

Exchange Street \Sheffield\ S2 5TR
www.artspace.org.uk 0114 276 176



Yorkshire Artspace Gallery
Open

Yorkshire Artspace

roots tangle in soil in the soil excrement
in the soil leaves in the soil wings legs eyes
where cells meet cells mycelia links roots in
soil roots join rhizomes join stems join leaves
join flowers petals twist and bend with leaves
share volatile compounds a leaf smells a leaf
on a leaf are left invisible footsteps foot and
paw imprints on crushed leaf and soft soil air
weaves between branches released carbon
devoured tannins run tings carried in bees
become roots become twigs become soil
beneath leaves drop become soil petals bow
become soil snow hides shadows chase light
melts snow becomes rain becomes water in
roots becomes shoots now leaves share air

VASE
TANK