



Uncanny Valley

Creative Project

Nick Deakin

Research process

Uncanny Valley is a series of images, which collages photographs of the Gleadless Valley estate. Whilst other estates have been canonised and redeveloped, Gleadless Valley, on the other hand, is backgrounded in critical consideration. Still without regeneration, it has been described as the city's worst area to live. The *Uncanny Valley* images are a collection of collages, using photographs taken by a series of photographers. The compositions repeat the lyrics of the estate – concrete, hand rails, tv aerials, windows, balconies, satellite dishes – and reinterprets them as a reality of fictions. The work is not concerned with the exhaustible knowledge of the estate. Instead, it is interested in the “withdrawn” twilight qualities of the estate. As such, it is not a panoptic fact file, but an oblique indirect approach to an otherwise under-imagined object. It reveals an aspect to the estate previously unconsidered when it has been approached exclusively from an architectural, socio-historical, or geographical perspective.

Research insights

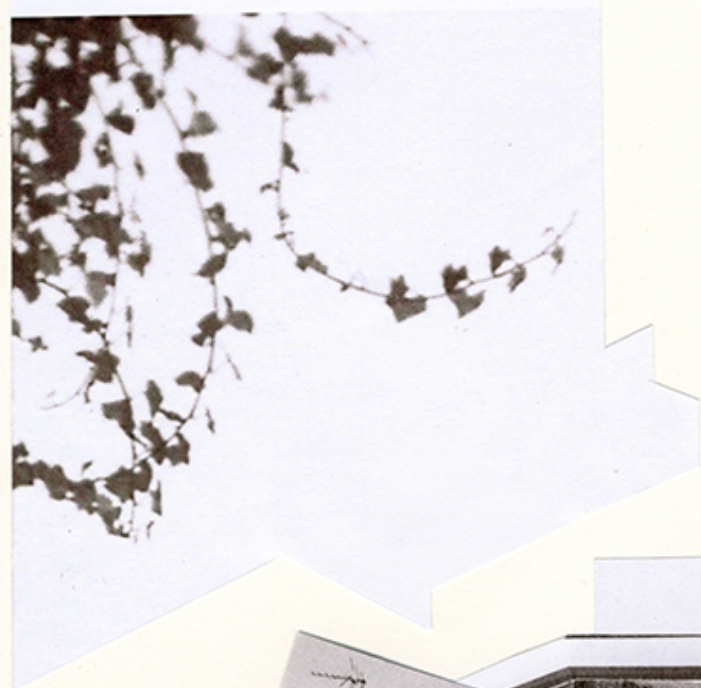
The work interrogates both the structure of imagery and the potential of co-authorship. It reveals how graphic design can sit between a long form essay and a fiction in communicating experiences of place. This exhibition furthers research considering the emergent qualities in encountering images situated in the mundanity of an everyday realism. The work also considers that the collage maker's job has not been to find something mystical in the mundane. Instead, it is to destabilise habits of perception and reveal their materials to always already be collage-like. These lines of enquiry are rare for graphic designers in considering the ambiguous, confusing, unfixed, and processual nature of images, signs and interpretation.

Dissemination

Uncanny Valley was exhibited at Temporary Contemporary, Market Gallery, Huddersfield. The exhibition was accompanied by a limited-edition artist's book which was available to buy at the opening and online.















Uncanny Valley

Nick Deakin

Contextual information

Build Your Own...

EMERGING

NICK DEAKIN



BUILD YOUR OWN EMERGING CITY

NICK DEAKIN



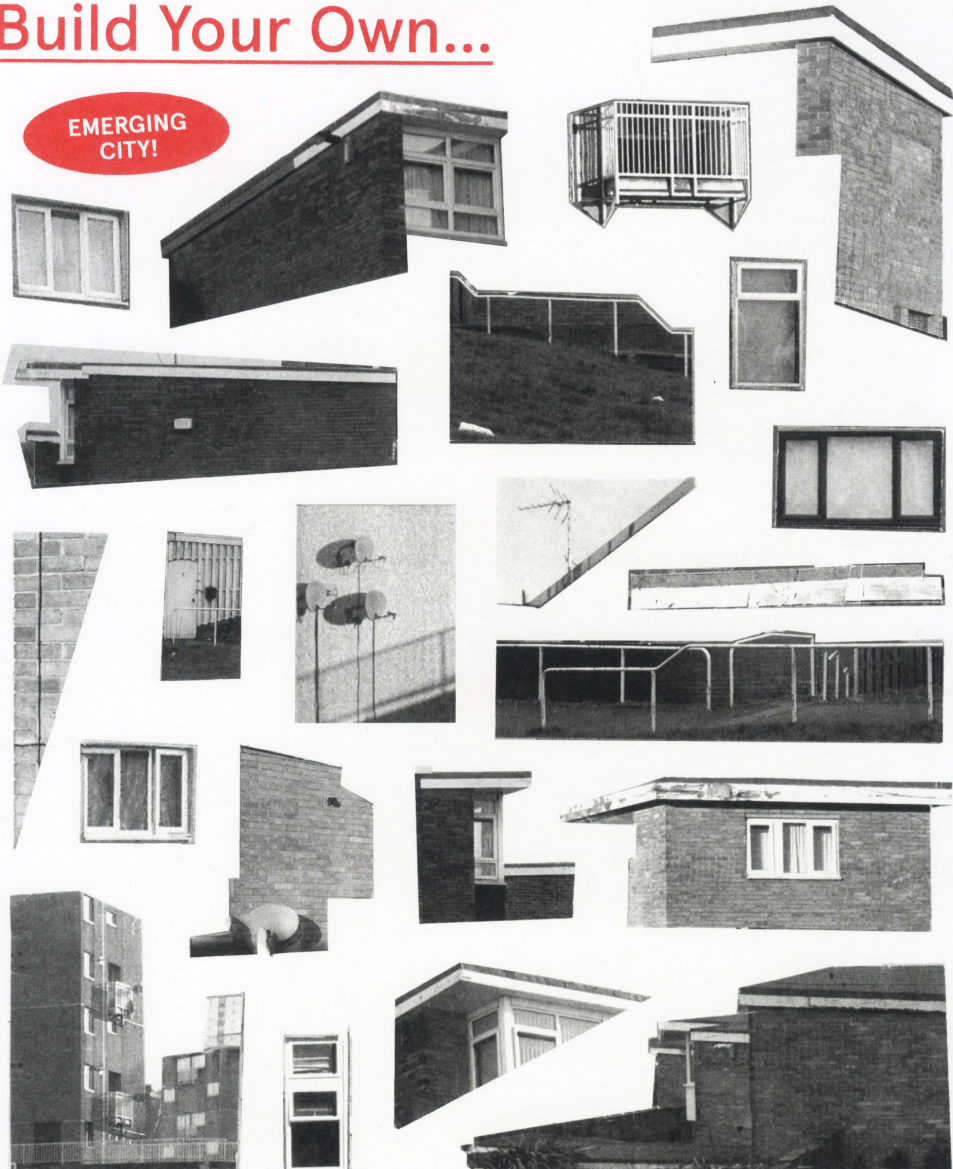
UNCANNY VALLEY

Build Your Own...

EMERGING CITY!



BUILD YOUR OWN EMERJAWS CITY



NICK DEAKIN

UNCANNY VALLEY



RICHER FUIE'PE!

NICK DEAKIN

2018

**UNCANNY
VALLEY**

**UNCANNY
VALLEY**

NICK DEAKIN

2018

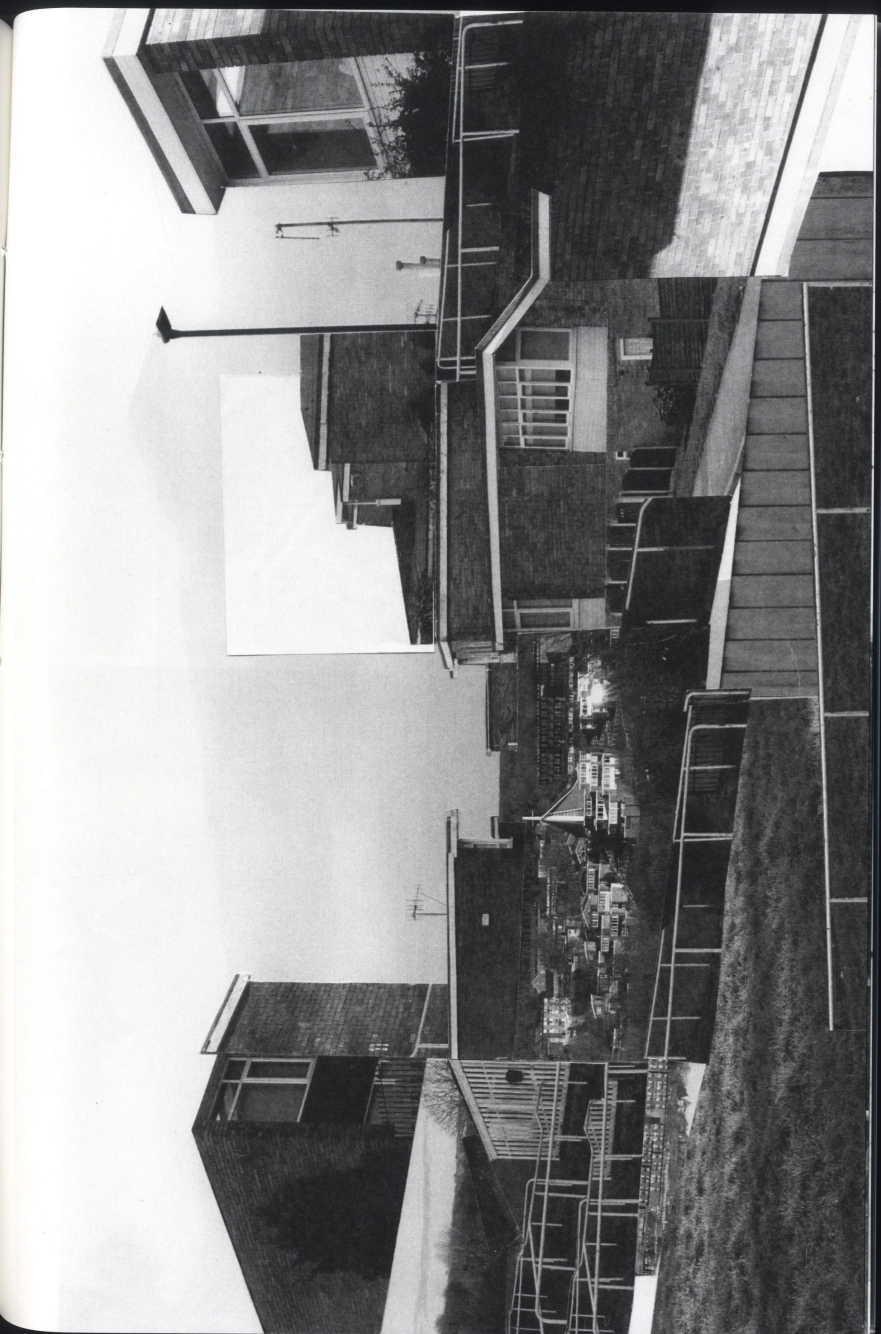
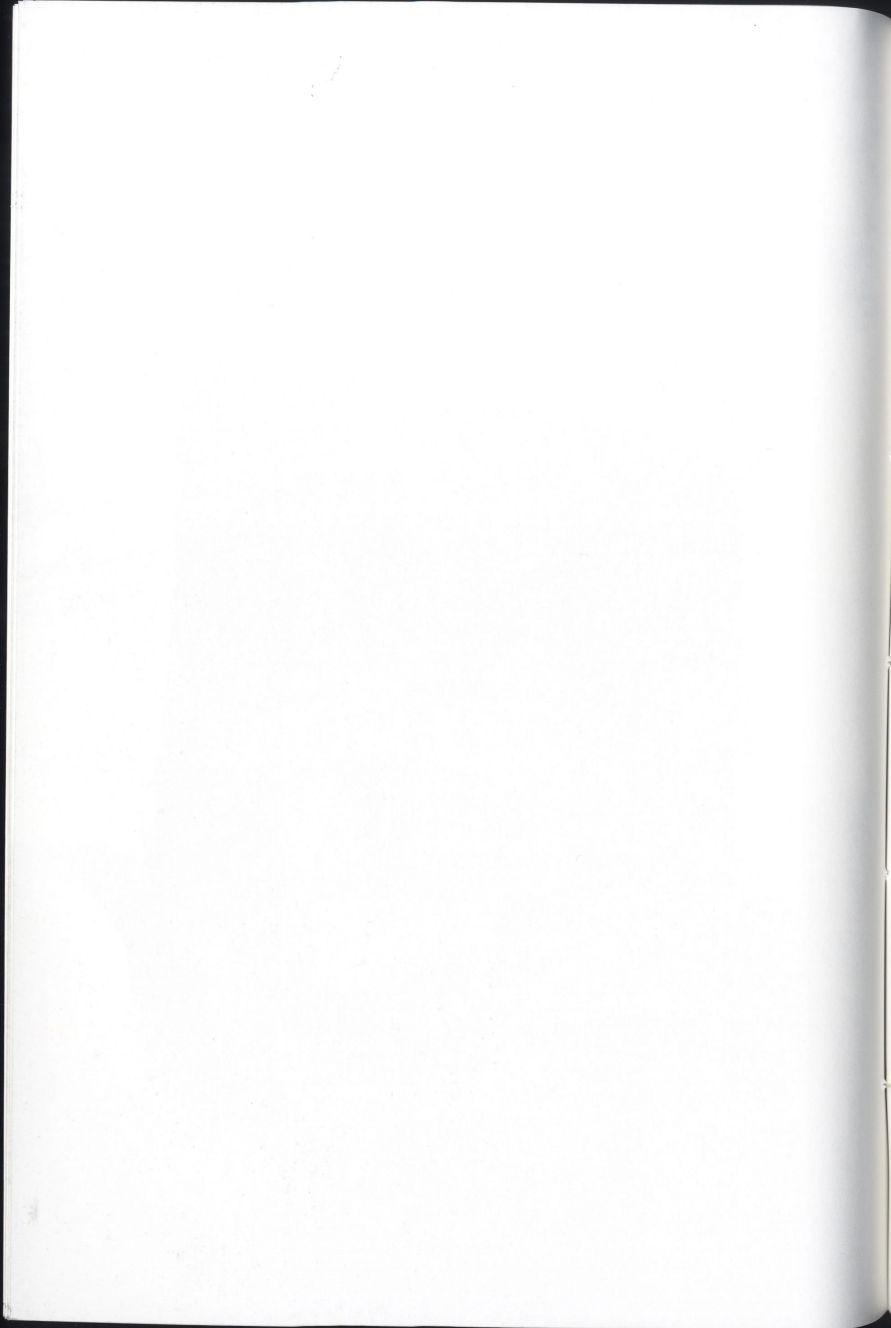
The Gleadless Valley estate is a post-WWII Sheffield housing development. Architecturally, it is not dissimilar to others around the country, but the unusual valley where the estate sits makes it unique. Along with other estates built under the same scheme, Sheffield was made "...an ever changing City emerging into a richer future" (Warman, 1969). Whilst some of the estates have been canonised and redeveloped, Gleadless Valley, on the other hand, is backgrounded in critical consideration. Still without regeneration, it has been described as the city's worst area to live (Thestar.co.uk, 2008).

The Uncanny Valley images are a montage of photographs taken by a series of photographers. The compositions repeat the lyrics of the estate – the hand rails, tv ariels, windows, balconies, satellite dishes – and reinterpret them as a reality of fictions. These new fictions make the estate's abyss of aesthetic potential tangible. Most viewers of these works will not have been to the site of the estate, for them, these montages exist as surrogate truths, as if they are pantomimes of a speculative reality.









[Blank page]



[Blank page]



Market Gallery
Temporary Contemporary
Huddersfield

NICK DEAKIN

UNCANNY VALLEY

Preview Night:
Thursday December 6th
5-8pm

Opening Hours:
7-21st December 2018
Mon-Sat
11am-4pm



Queensgate
Market

University of
HUDDERSFIELD
Inspiring tomorrow's professionals

 Kirklees
COUNCIL



