



CAROLINE PRATT

Utilising colour in textiles to promote closer
connections to the natural world.



BIOPHILIA : an innate and genetically determined love for the natural world felt universally by humankind

Edward O. Wilson



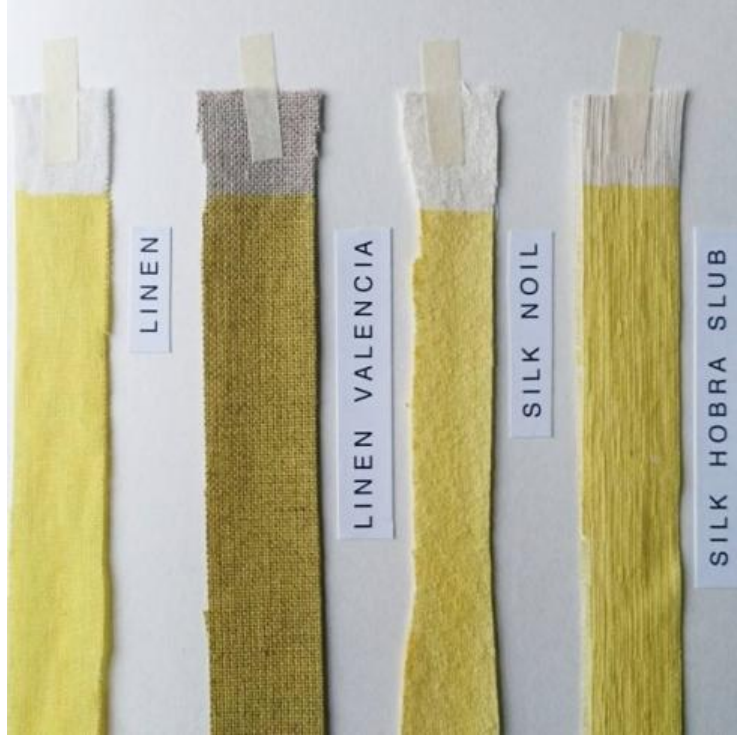


...the use of nature within textiles and pattern “could inspire a feeling of freedom even indoors, in enclosed spaces and at the same time provide a refuge from the pressures of life in the technological age”

Josef Frank

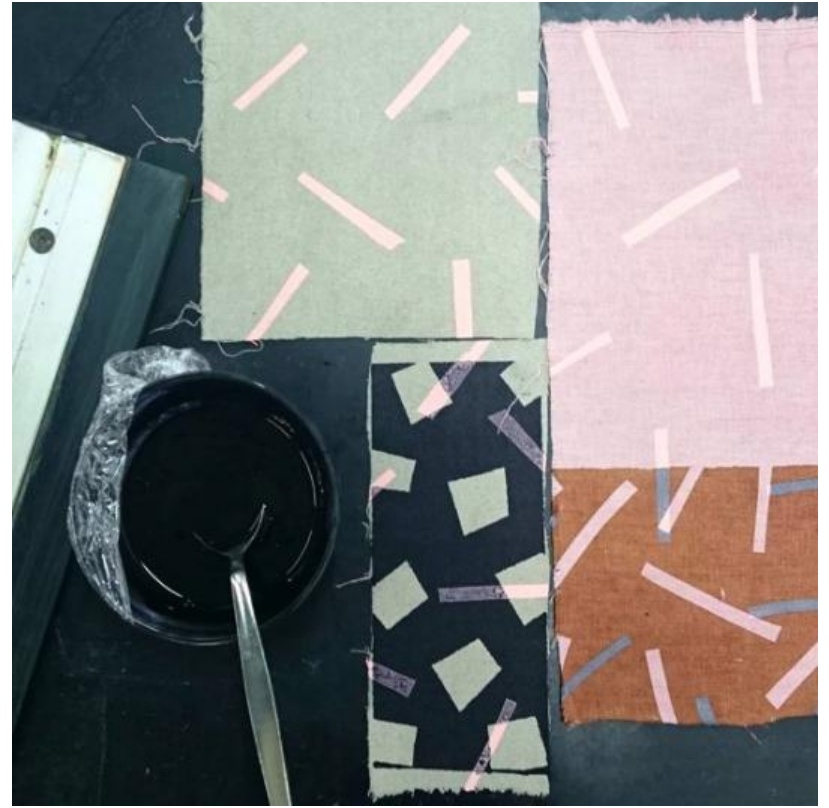








emotive and spiritual qualities such as light, change and the hand of nature/man rather than purely decorative motifs



Logwood and Iron : Sanderswood : Elderberry : Synthetic water-based binder ff and pigment

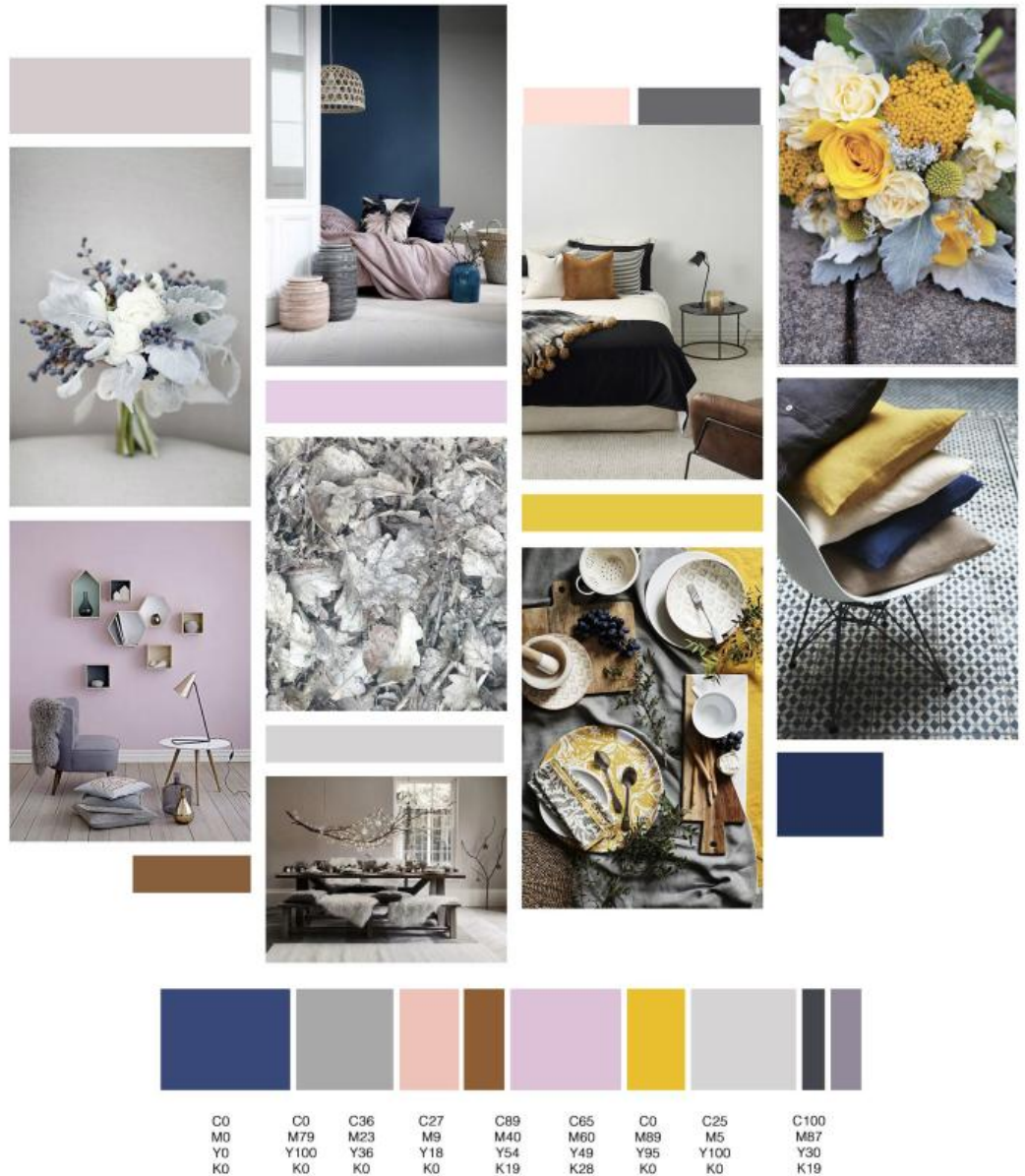
SEQUENCES : CYCLES



SEASONAL COLOUR :

Frosted Silence

A stripped back selection of soft winter greys and frostbitten lilacs dominate a palette that evokes the feeling of a calm and contemplative landscape. Delicate tones are brought to life with sumptuous ochres and rich navy blues, providing a sense of warmth and hygge that is comforting and reassuring.





A sumptuous and rich palette of warm bold tones inspired by the Autumn season and the shortening of daylight hours.

Intense and moody shades of midnight blue and chestnut brown are lifted with vivid pops of yellow and bright berry reds. Colour is strong and confident, balancing comforting, familiar shades against accents of unexpected chroma.

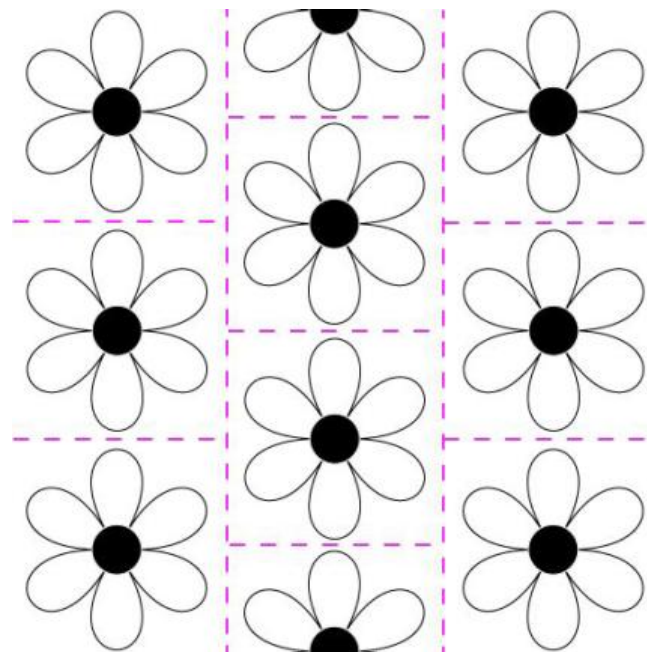
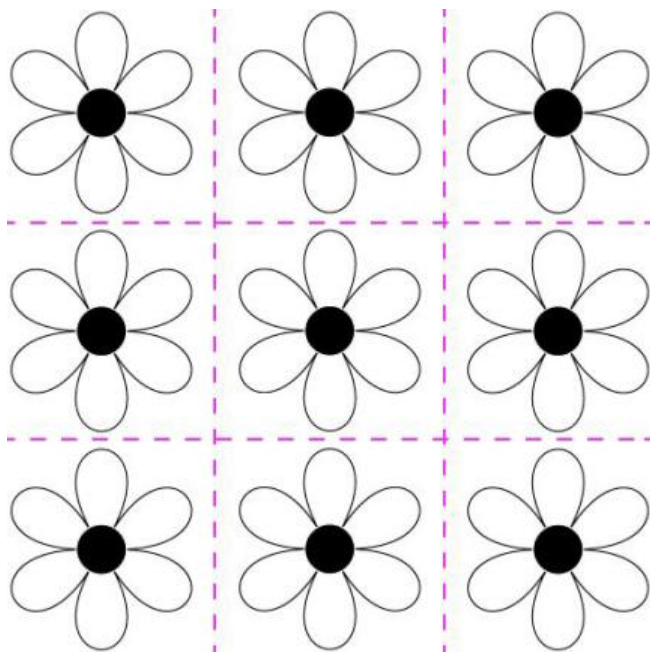
Darker tones grow within the collection
to dominate, signaling a new chapter
and a new dawn
in colour.



Cloudless Abundance

Vivid and intense; a palette that highlights the rich tones of Summer. Celebrating the bold hues of the season; dramatic combinations full of energy bring high contrast and clashing pairings. Strong poppy reds sit against deep ultramarines, whilst fuschia pinks and zesty yellows soften harsh primary tones to create a harmonised spectrum of colour.

TEXTILE REPEATS : THE MIMICING OF NATURAL CYCLES



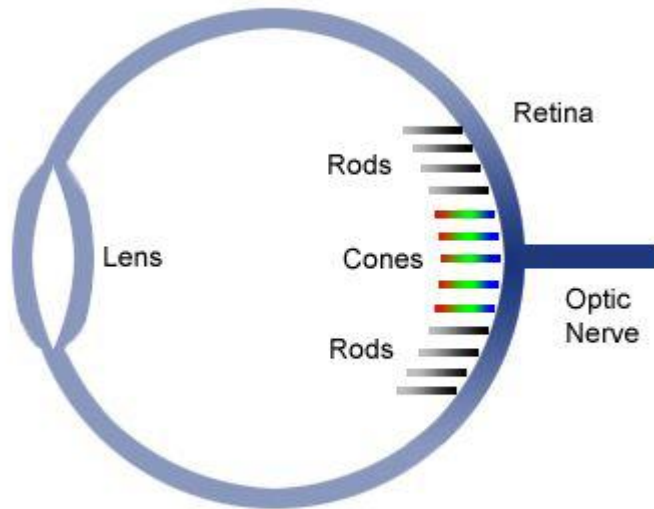






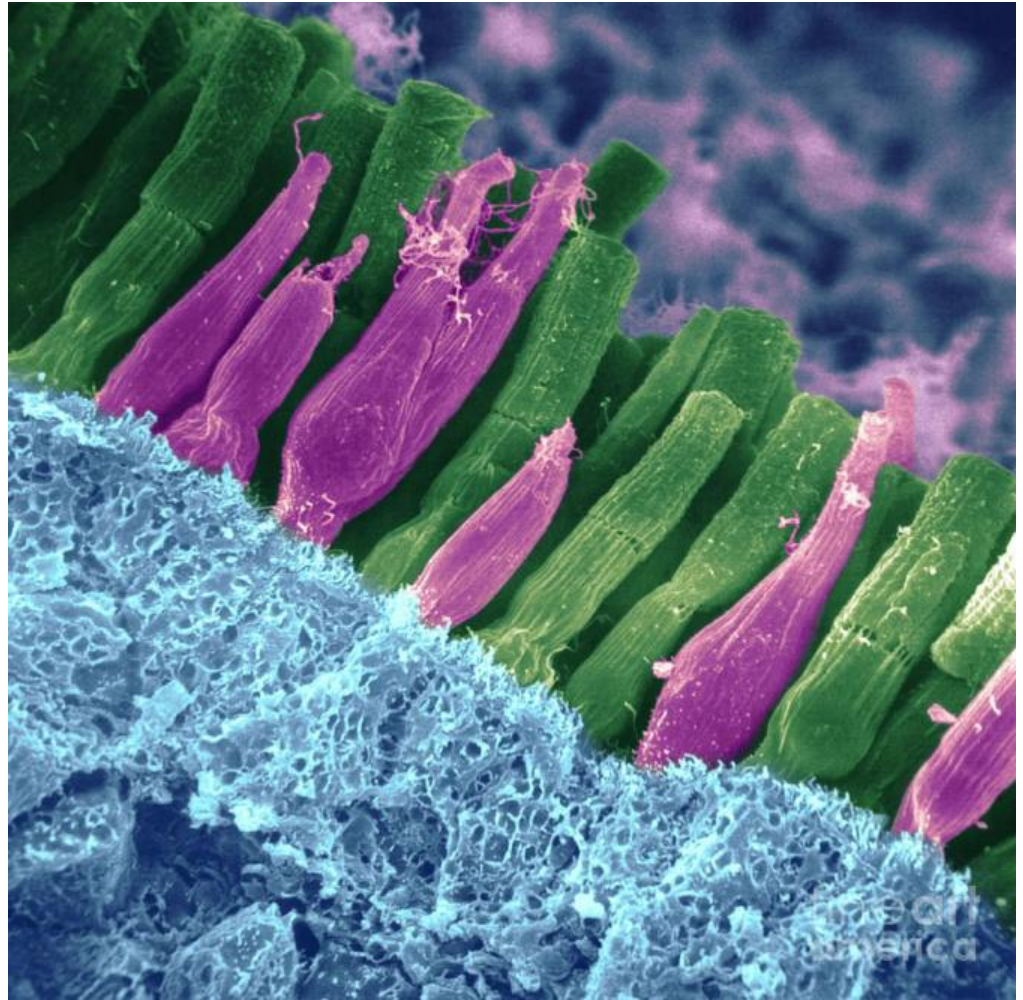


COLOUR AND THE REPEAT - PURKINJE EFFECT :



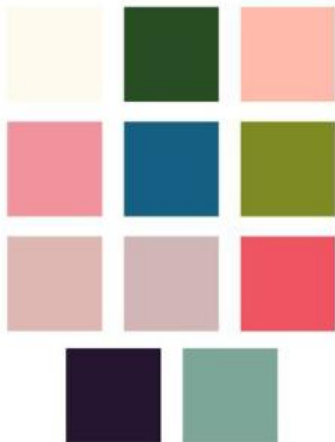
R O D S - shift towards the blue end of the spectrum at low light - ie. dusk

C O N E S - receptive to bright light (daylight) - reds and greens dominate in bright illumination and become darker in low light



PURKINJE EFFECT :

Dawn



Green & Blue appear first
Pale red shades follow

Midday



Full sun pales colours and causes
them to have a white tonality.
Reds and greens appear lighter in
the brighter lumination

Dusk



Reds and Yellows dominate as sunset
approaches before moving to be very dark
and letting blues and greens dominate



DAWN - BLUES AND GREENS APPEAR FIRST



PALE REDS AND WARMER SHADES FOLLOW AS T
HE SUN RISES

THANK YOU