



## **Forwards Always - Seasonal Observations through Image and Word**

**Matthew Hodson**

The output is a creative project comprising of twelve large scale printed banners, spreads from a poetry book, developmental sketchbook work and examples of broader contextual inputs.

### **Research Process**

The work exhibited was underpinned by Hodson's ongoing research into open mode play and improvisation. The exhibit sought to promote improvisation as a vital methodology within the practices of both drawing and writing. The drawings for these banners were made with pen & ink. It is during this process of drawing where I have implemented new models of abstraction and simplification to reduce each idea down to its bare minimum in an attempt to convey the specific mood or atmosphere observed at its point of conception. This has meant drawing roughs and sketches exhaustively across sketchbooks, in order to refine each design to its most immediate and impactful. In addition, further practices of iteration and modulation through drawing have allowed Hodson to refine the choreography of each drawing as a studio-based performance. The concept for the banners emerged from Hodson's involvement in the Natives residency held in Swaledale, during spring 2016, led by Nicolas Burrows.

### **Research Insight**

Advocating improvisation as a means by which the poet or illustrator can identify, sustain and develop their own emerging tone of voice through performance and play. Hodson's research is informed by Csíkszentmihályi's writing around Flow Theory, Nachmanovitch's discussions on improvisation and Gladwell's writing on the Adaptive Subconscious. The underlying principle emerged from the work on the importance of open mode, uninhibited play and improvisation.

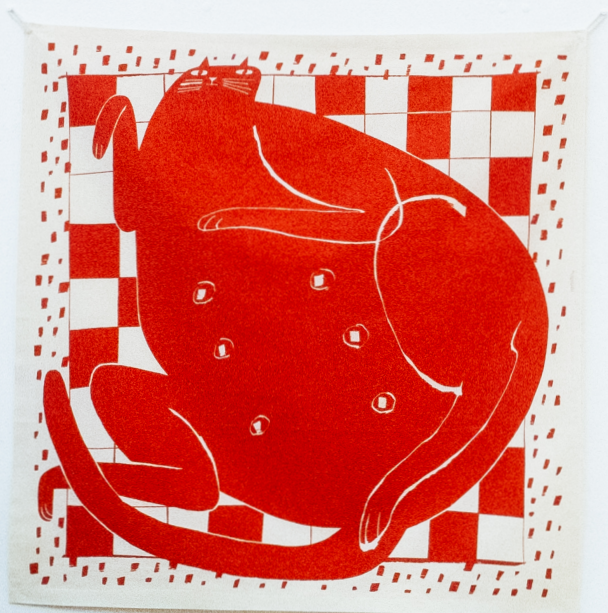
### **Dissemination**

The exhibition was disseminated at the Vernon Street Gallery, Leeds Arts University, 15 September - 27 October 2017.

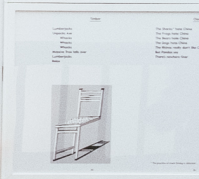
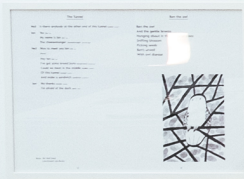
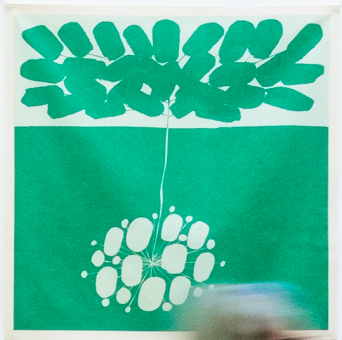
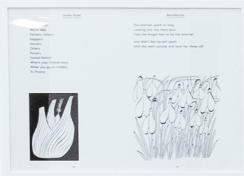
# Forwards Always

Seasonal observations through image & word

Matthew the Horse













**Snake Hotel**

Snake hotel  
Warm B&B  
Fishery cattery  
Doggerly  
Harpy  
Omny  
Puttery  
Fennel Mennel  
Where your fennel stays  
While you go on holiday  
To France

**Recalibrate**

The internet spent so long  
Looking into the man's face  
That she forgot how to be the internet  
And didn't feel herself again  
Until she went outside and took her shoes off

**Bear Egg**

Look at this small furry ball  
It's brown  
Like the egg a bear would lay  
What colour do you think it is  
Underneath its fur?  
No  
I'm sorry  
Your guess is wrong  
It's green  
Underneath  
Its brown fur  
They call it Kee Wee Froop\*  
And it tastes like the jungle

**Warnings**

The lake aches  
The mountain  
Is in pain  
The woods shudder  
The desert  
Starts  
The archipelago feels quite anxious  
The rivers shiver  
The ice caps collapse  
The tundra is under  
The weather  
The caves are blacker and colder than usual

**The Tunnel**

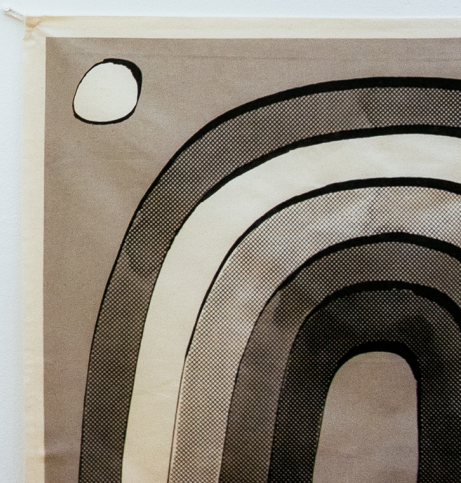
Nail Is there anybody on the other end of this tunnel *under* ...  
Nail No ...  
My name is Ben ...  
The cheeseburger *cheeseburger* ...  
Nail Nice to meet you Ben ...  
Ben I've got some bread here *bread* ...  
Could we meet in the middle *middle* ...  
Of this tunnel *tunnel* ...  
And make a sandwich *sandwich* ...  
Nail No thanks *thanks* ...  
I'm afraid of the dark *dark* ...

**Ben the owl**

Ben the owl  
And the gentle breeze  
Hanging about in the leaves of trees  
Sniffing blossom  
Picking seeds  
Ben's unwell  
With owl disease

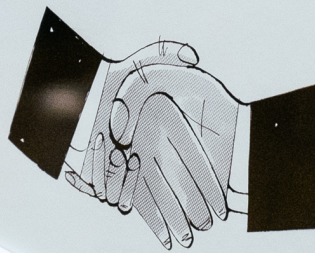
**Moods<sup>1</sup>**  
**Jewels<sup>2</sup>**  
**Moulds**  
**Rules**  
**Nudes**  
**Tubes**  
**Moobs<sup>3</sup>**  
**Prunes<sup>4</sup>**  
**Moons**  
**Hooves<sup>5</sup>**  
**Glues**  
**Spoons**  
**Stools**  
**Bruise**  
**Blues<sup>6</sup>**  
**Ooze**  
**and**  
**Feelings<sup>7</sup>**

1. Similar to feelings  
2. Spelled mood is pronunciation  
3. Not mood, white mood  
4. Not mood, white mood  
5. Not mood, white mood  
6. Not mood, white mood  
7. Similar to mood



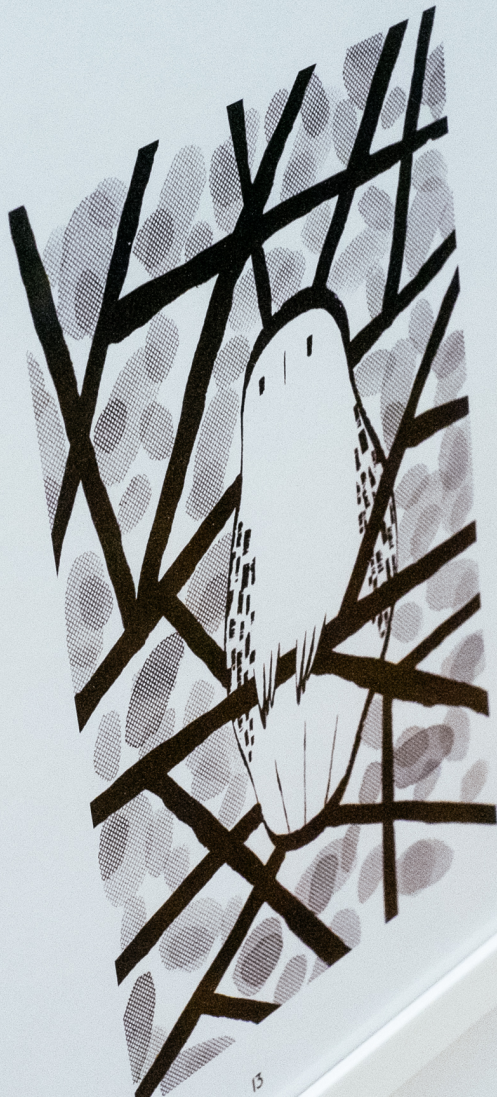
My wife uses beauty creams\*  
She keeps them in pots  
My wife is so beautiful  
She wears her creams a lot  
These beauty creams  
They smell so nice  
My wife's creams smell like paradise  
My wife uses beauty creams  
She keeps them in pots

In the modern buildings  
 Busy people doing tasks  
 Walking down the corridors  
 Down stairs  
 Through fire doors  
 Busy people walking  
 Within the modern buildings  
 Heading through the corridors  
 They're going for a poo



Fly tipping in the city  
At the nature reserve  
in the poorest of all cities  
By the waterfall.  
Nobody is looking  
in this city no one cares  
So why not throw  
Another fridge  
Down the waterfall

And  
Hanging about in  
Sniffing blossom  
Picking seeds  
Ben's unwell  
With owl disease



Prunes<sup>4</sup>  
Moons  
Hooves<sup>5</sup>  
Glues  
Spoons  
Stools  
Bruise  
Blues<sup>6</sup>  
Ooze  
and  
Feelings<sup>7</sup>

1. The owl is a symbol of wisdom.  
2. The owl is a symbol of wisdom.  
3. The owl is a symbol of wisdom.  
4. The owl is a symbol of wisdom.  
5. The owl is a symbol of wisdom.  
6. The owl is a symbol of wisdom.  
7. The owl is a symbol of wisdom.

