



## **Imagined Realms**

### **Group Exhibition**

**Garry Barker**

An exhibition of contemporary visionary landscape that was chosen by the artist and curator Clive Hicks-Jenkins for the Royal Cambrian Academy. (The Welsh equivalent to the English Royal Academy)

Hicks-Jenkins was looking to select artists that he considered continued an old animist or spiritual tradition of landscape that he wanted to present through the prism of chosen artists' imaginative lives.

I had three large drawings chosen, all of which were allegorical landscapes based on conversations with people I had engaged with on the streets of Chapeltown.

#### Exhibition

**Imagined Realms, The Royal Cambrian Academy, 21 October - 11 November 2017.**

Imagined Realms

An exhibition of contemporary landscape images chosen by Clive Hicks-Jenkins RCA

The Royal Cambrian Academy

21 Oct 2017 - 11 Nov 2017

CLIVE HICKS-JENKINS CURATES 'IMAGINED REALMS' AT  
THE ROYAL CAMBRIAN ACADEMY CONWY /OCTOBER  
12, 2017



Artistiaid Gwadd,  
'Teyrnasoedd Dychmygol'  
Invited Artists,  
'Imagined Realms'  
**Clive Hicks-Jenkins RCA**

Garry Barker . Phillip Cooper  
Geoffrey Coupland . Orson Coupland  
Neil Hadfield . Jonny Hannah  
Sharon Hannah . Peter Lloyd  
Desdemona McCannon  
Chichi Parish . Sarah Raphael-Balm  
Sarah Thwaites . Ian Whadcock  
Abi Whitehouse

Fe'ch gwahoddir i agoriad o  
'**Teyrnasoedd Dychmygol**'

*Detholiad o artistiaid ac arlunwyr amlwg a wahoddwyd  
gan Clive Hicks-Jenkins AFG i arddangos eu gwaith.  
yn yr Academi Frenhinol Gymreig, Conwy  
Dydd Sadwrn y 21 Hydref am 2:00 ym, 2017*

You are invited to the opening of  
'**Imagined Realms**'

*A selection of eminent artists chosen to exhibit by  
Clive Hicks-Jenkins RCA  
at the Royal Cambrian Academy, Conwy  
Saturday 21 October at 2:00 pm, 2017*

Bydd yr arddangosfa yn parhau tan Tachwedd 12, 2017  
The exhibition continues until November 12, 2017



UPPER GALLERY 21 OCT 17 - 11 NOV 17

## CLIVE HICKS-JENKINS RCA

**Garry Barker: Philip Cooper: Geoffrey Coupland: Orson Coupland: Neil Hadfield: Jonny Hannah: Sharon Hannah: Peter Lloyd: Desdemona McCannon: Chichi Parish: Sarah Raphael-Balme: Sarah Thwaites: Ian Whadcock: Abi Whitehouse**

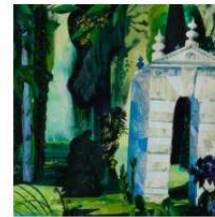
"When I was invited by the Royal Cambrian Academy to curate an exhibition of artists I admire, I knew immediately that I wanted to open dialogues about landscape. I've always been influenced by the Welsh landscapes I've lived in, but it's been a long time since the paintings and drawings I make have represented them in a topographically recognisable form. Even back when they did, it was an intensely charged personal view, less about geography than my feelings for the landscape and my history within it.

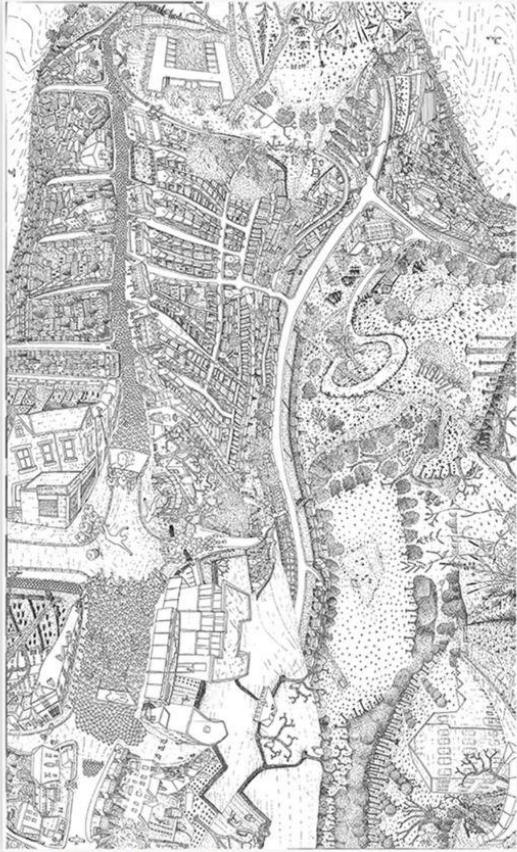
For this exhibition I wanted to choose artists who would explore the interior landscapes that can be so important to us. The artists for the most part come from beyond Wales, this being an opportunity to invite guests whose work would not normally be seen here.

Here are landscapes presented through the prisms of the artists' imaginative lives. What became thrillingly clear as the responses came back is that landscape in the contemporary arts isn't necessarily contained within a frame, though for the traditionalist there are some of those here, too."

Clive Hicks-Jenkins 2017

 POST IT  TWEET IT  PIN IT

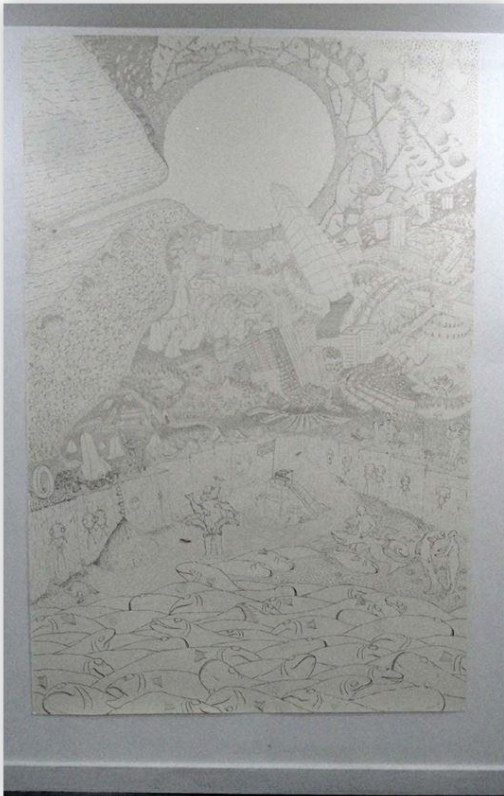




Garry Barker "Allegorical Map of Chapeltown" Pen & Ink on 2 of 53 Paper 8ft 3in x 5ft £2000 Unframed



Garry Barker "In Memory of Forgotten Truths" Pen & Ink on Paper 3 of 53 7ft 6in x 4ft 10in £2000 Unframed



Garry Barker "Promise On Arrival" Pen & Ink On Paper 7ft X 4ft of 53 6in £2000 Unframed